

YOUR MEDITECH DESKTOP

The Meditech Desktop has changed from Icons to Text.

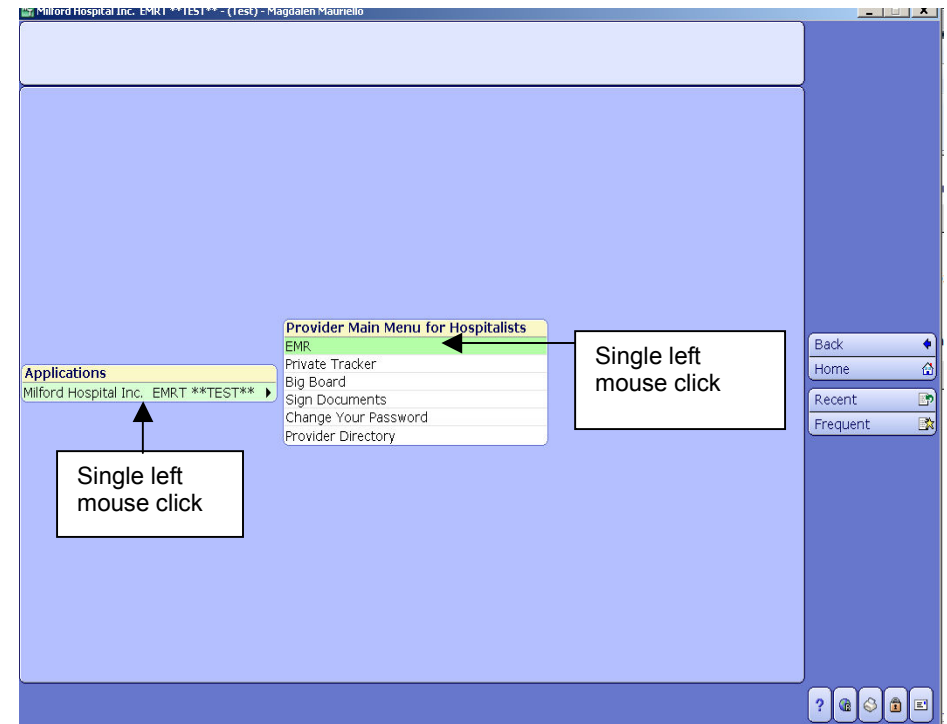
To access the EMR:

- Single left mouse click on Milford Hospital Inc. EMRT, then
- Single left mouse click on EMR.

Meditech 5.64

Physician Documentation

Pocket Guide



The EMR has not changed in this new version of Meditech. It looks and functions the same.



TEMPLATES


Template navigation changed with certain template sections. The table below includes all these sections. You may use the mouse, and/or right arrow and enter keys on the keyboard, and/or ask to have your Dragon microphone programmed to navigate.

Template Sections	Navigation
-Allergies -Referrals -Prescriptions -Requesting Physician	Use mouse, select "edit" to make any additions/changes. To move to next section of template, use the mouse to select that section.
-Tetanus Vaccination	Free text field, use right arrow and type when cell is highlighted in green, use enter to access next section of template
-Documents Reviewed -Exam Limitations -Review of Systems	Point and click, use mouse; select bubble to enter a comment (comment field appears at bottom of page)
Disposition	Use mouse to select



ECC/WALK-IN TRACKERS

The ECC/Walk-in Trackers have changed in appearance, but function the same way.

- Header section corresponds to the information within the cells below.
- Clicking on a word in the header, will sort patients by that keyword.
- Patient allergy: view more detail by clicking on the  symbol to the left of the header.
- More than 9 patients, a "Scroll Bar" will appear to the right of the tracker so you can navigate through all patients.
- **"Find Patient"** in the footer is used to find and highlight a specific patient. This replaces the **"Go To"** patient routine

The screenshot shows the ECC/Walk-in Tracker interface. At the top, patient information for Zzmouse, Mickey is displayed: Non-Urgent / Ear Pain Left, DOB: 02/02/1949, 62/M, V00000011619, Allergy/AdvReac: No Known Allergies, 05 - Emergency Care Center, PRE ER. Below this is a table of patients:

Rm	EP	Pri	Name	Age	Status	Adm Doc	I/P Rm	Los
05	Blo	4	Zzmouse, Mickey	62	EVAL			
			Ear Pain Left			55:58 EKG	Draft	56:03
06	Wal	3	Zzfino, Anthony	100	EVAL	L AB M IC	CZ UA	
			M Fno Chest Pain (Cardiac)			56:31 EKG		56:35
11			Zztop, Lourdes	43	REG			
			FV Alcohol Intoxication			51:19		* 51:22
			AK Zztest, Ajani	3Y ...	RECEPT			
						50:39		50:39
			3 Denilins, Joe	88	RECEPT			
						51:47		* 51:49
			3 Zzaungst, Mary	43	RECEPT			
						36:19		36:20
			4 Zzsmith, Yellow	65	TRIAGE			
						26:27		26:32

At the bottom of the interface, there are buttons for "Find Patient", "Add to My List", "Edit My List", and "Refresh Sort Default".